





Worklist: 1206

<u>LAB_CASE</u>	<u>ITEM</u>	<u>TASK_ID</u>	<u>DESCRIPTION</u>	
M2016-0433	3	61192	6.1.2 Blood Cannabinoids by LC	
M2016-0531	1	61194	6.1.2 Blood Cannabinoids by LC	
M2016-0615	1	61196	6.1.2 Blood Cannabinoids by LC	
P2016-0264	1	61197	6.1.2 Blood Cannabinoids by LC	
P2016-0297	4	61199	6.1.2 Blood Cannabinoids by LC	
P2016-0321	1	61200	6.1.2 Blood Cannabinoids by LC	
P2016-0386	1	61201	6.1.2 Blood Cannabinoids by LC	
P2016-0419	1	61202	6.1.2 Blood Cannabinoids by LC	
P2016-0420	1	61204	6.1.2 Blood Cannabinoids by LC	
P2016-0421	1	61205	6.1.2 Blood Cannabinoids by LC	

Reviewed 7/27/16



Worklist Report

Worklist Path:	C:\MassHunter\ISP Methods\worklists\CS Combined 072216.wkl
Date Modified:	07/22/2016 12:05:09 PM
Date Printed:	07/22/2016 12:05:16 PM

Worklist Run Parameters

Operator Name:	62340
Run Type:	Standard Start
Part of Method to Run:	Acquisition Only
Execution for Acquisition-DA:	Synchronous
Acquisition Method Path:	C:\MassHunter\ISP Methods\Acquisition
DA Method Path:	D:\MassHunter\methods
Data File Path:	C:\MassHunter\Data\2016\042516CANN
Pre-Worklist Script:	---
Post-Worklist Script:	SCP_InstrumentStandby(){MH_Acq_Scripts.exe}
Acquisition Clean Up Script:	SCP_InstrumentStandby(){MH_Acq_Scripts.exe}
Overlapped Injection:	No
Clear sample selection after run:	Yes
Wait Time for Ready(Min):	10
Threshold Disk Value(GB):	10
Comment:	---

Plate Barcode Information

Plate	Barcode
P1	
P2	

Worklist Table

Sample Position	Sample Name	Method	Data File	Sample Type	Level Name	Comment	Info.
P2-A1	Blank	isp blood cannabinoids Poky 2016-1.m	Blank1-r001.d	Blank		AM 6.1.2 Cannabinoids by LCQQQ	
P2-A1	Blank	isp blood cannabinoids Poky 2016-1.m	Blank2-r001.d	Blank		AM 6.1.2 Cannabinoids by LCQQQ	
P2-A2	Blood: 1_5 ng/mL	isp blood cannabinoids Poky 2016-1.m	B_CAL1-r001.d	Calibration	1	AM 6.1.2 Cannabinoids by LCQQQ	c-THC @5ng/mL, all others @1 ng/mL
P2-A3	Blood: 2_10 ng/mL	isp blood cannabinoids Poky 2016-1.m	B_CAL2_r001.d	Calibration	2	AM 6.1.2 Cannabinoids by LCQQQ	c-THC @10ng/mL, all others @2 ng/mL
P2-A4	Blood: 5_25 ng/mL	isp blood cannabinoids Poky 2016-1.m	B_CAL3_r001.d	Calibration	3	AM 6.1.2 Cannabinoids by LCQQQ	c-THC @25ng/mL, all others @5 ng/mL
P2-A5	Blood: 10_50 ng/mL	isp blood cannabinoids Poky 2016-1.m	B_CAL4_r001.d	Calibration	4	AM 6.1.2 Cannabinoids by LCQQQ	c-THC @50ng/mL, all others @10 ng/mL
P2-A6		isp blood cannabinoids Poky 2016-1.m	B_CAL5_r001.d	Calibration	5		c-THC @125ng/mL, all

Sample Position	Sample Name	Method	Data File	Sample Type	Level Name	Comment	Info. ๕
	Blood: 25_125 ngmL					AM 6.1.2 Cannabinoids by LCQQQ	others @25 ng/mL
P2-A7	Blood: 50_250 ngmL	isp blood cannabinoids Poky 2016-1.m	B_CAL6_r001.d	Calibration	6	AM 6.1.2 Cannabinoids by LCQQQ	c-THC @250ng/mL, all others @50 ng/mL
P2-A8	Blood: 100_500 ngmL	isp blood cannabinoids Poky 2016-1.m	B_CAL7_r001.d	Calibration	7	AM 6.1.2 Cannabinoids by LCQQQ	c-THC @500ng/mL, all others @100 ng/mL
P2-A1	Blank	isp blood cannabinoids Poky 2016-1.m	Carryover blank1_r001.d	Blank		AM 6.1.2 Cannabinoids by LCQQQ	
P2-A9	Blood Negative Control	isp blood cannabinoids Poky 2016-1.m	B-NC-r001.d	Sample		AM 6.1.2 Cannabinoids by LCQQQ	Negative Blood UTAK Lot B1013
P2-B1	Blood PC 1	isp blood cannabinoids Poky 2016-1.m	B-POS Ctrl 1-r001.d	Sample		AM 6.1.2 Cannabinoids by LCQQQ	Positive Control-UTAK B1013 + WS060716
P2-A1	Blank	isp blood cannabinoids Poky 2016-1.m	Carryover blank2_r001.d	Blank		AM 6.1.2 Cannabinoids by LCQQQ	
P2-A9	Blank M2016-0433-3	isp blood cannabinoids Poky 2016-1.m	M2016-0433-3_BLK_r001.d	Blank		AM 6.1.2 Cannabinoids by LCQQQ	
P2-B2	M2016-0433-3	isp blood cannabinoids Poky 2016-1.m	M2016-0433-3-r001.d	Sample		AM 6.1.2 Cannabinoids by LCQQQ	Blood
P2-A9	Blank M2016-0531-1	isp blood cannabinoids Poky 2016-1.m	M2016-0531-1_BLK_r001.d	Blank		AM 6.1.2 Cannabinoids by LCQQQ	
P2-B3	M2016-0531-1	isp blood cannabinoids Poky 2016-1.m	M2016-0531-1-r001.d	Sample		AM 6.1.2 Cannabinoids by LCQQQ	Blood
P2-A9	Blank M2016-0615-1	isp blood cannabinoids Poky 2016-1.m	M2016-0615-1_BLK_r001.d	Blank		AM 6.1.2 Cannabinoids by LCQQQ	
P2-B4	M2016-0615-1	isp blood cannabinoids Poky 2016-1.m	M2016-0615-1-r001.d	Sample		AM 6.1.2 Cannabinoids by LCQQQ	Blood
P2-A9	Blank P2016-0264-1	isp blood cannabinoids Poky 2016-1.m	P2016-0264-1_BLK_r001.d	Blank		AM 6.1.2 Cannabinoids by LCQQQ	
P2-B5	P2016-0264-1	isp blood cannabinoids Poky 2016-1.m	P2016-0264-1-r001.d	Sample		AM 6.1.2 Cannabinoids by LCQQQ	Blood
P2-A9	Blank P2016-0297-4	isp blood cannabinoids Poky 2016-1.m	P2016-0297-4_BLK_r001.d	Blank		AM 6.1.2 Cannabinoids by LCQQQ	
P2-B6	P2016-0297-4	isp blood cannabinoids Poky 2016-1.m	P2016-0297-4-r001.d	Sample		AM 6.1.2 Cannabinoids by LCQQQ	Blood
P2-A1	Blank	isp blood cannabinoids Poky 2016-1.m	cann-Carryover blank3_r001.d	Blank		AM 6.1.2 Cannabinoids by LCQQQ	
P2-C3	Blood PC 2	isp blood cannabinoids Poky 2016-1.m	B-POS Ctrl 2-r001.d	Sample		AM 6.1.2 Cannabinoids by LCQQQ	Positive Control-UTAK B1013 + WS060716
P2-A1	Blank	isp blood cannabinoids Poky 2016-1.m	Carryover blank4_r001.d	Blank		AM 6.1.2 Cannabinoids by LCQQQ	

Sample Position	Sample Name	Method	Data File	Sample Type	Level Name	Comment	Info. 9
P2-A9	Blank P2016-0321-1	isp blood cannabinoids Poky 2016-1.m	P2016-0321-1_BLK_r001.d	Blank		AM 6.1.2 Cannabinoids by LCQQQ	
P2-B7	P2016-0321-1	isp blood cannabinoids Poky 2016-1.m	P2016-0321-1-r001.d	Sample		AM 6.1.2 Cannabinoids by LCQQQ	Blood
P2-A9	Blank P2016-0386-1	isp blood cannabinoids Poky 2016-1.m	P2016-0386-1_BLK_r001.d	Blank		AM 6.1.2 Cannabinoids by LCQQQ	
P2-B8	P2016-0386-1	isp blood cannabinoids Poky 2016-1.m	P2016-0386-1-r001.d	Sample		AM 6.1.2 Cannabinoids by LCQQQ	Blood
P2-A9	Blank P2016-0419-1	isp blood cannabinoids Poky 2016-1.m	P2016-0419-1_BLK_r001.d	Blank		AM 6.1.2 Cannabinoids by LCQQQ	
P2-B9	P2016-0419-1	isp blood cannabinoids Poky 2016-1.m	P2016-0419-1-r001.d	Sample		AM 6.1.2 Cannabinoids by LCQQQ	Blood
P2-A9	Blank P2016-0420-1	isp blood cannabinoids Poky 2016-1.m	P2016-0420-1_BLK_r001.d	Blank		AM 6.1.2 Cannabinoids by LCQQQ	
P2-C1	P2016-0420-1	isp blood cannabinoids Poky 2016-1.m	P2016-0420-1-r001.d	Sample		AM 6.1.2 Cannabinoids by LCQQQ	Blood
P2-A9	Blank P2016-0421-1	isp blood cannabinoids Poky 2016-1.m	P2016-0421-1_BLK_r001.d	Blank		AM 6.1.2 Cannabinoids by LCQQQ	
P2-C2	P2016-0421-1	isp blood cannabinoids Poky 2016-1.m	P2016-0421-1-r001.d	Sample		AM 6.1.2 Cannabinoids by LCQQQ	Blood
P2-A1	Blank	isp blood cannabinoids Poky 2016-1.m	Blank3-r001.d	Blank		AM 6.1.2 Cannabinoids by LCQQQ	Blood
P1-F9	Blank	Benzos_Z_Drugs_ACN_FA_ISP_2016.m	BZ-Blank1-r001.d	Blank		AM 6.1.1 Benzo and Z by LCQQQ	Blood
P1-F9	Blank	Benzos_Z_Drugs_ACN_FA_ISP_2016.m	BZ-Blank2-r001.d	Blank		AM 6.1.1 Benzo and Z by LCQQQ	Blood
P1-F8	5 ng/mL	Benzos_Z_Drugs_ACN_FA_ISP_2016.m	BZ-5 ng/mL-r001.d	Calibration	1	AM 6.1.1 Benzo and Z by LCQQQ	Blood
P1-F7	10 ng/mL	Benzos_Z_Drugs_ACN_FA_ISP_2016.m	BZ-10 ng/mL-r001.d	Calibration	2	AM 6.1.1 Benzo and Z by LCQQQ	
P1-F6	25 ng/mL	Benzos_Z_Drugs_ACN_FA_ISP_2016.m	BZ-25 ng/mL_r001.d	Calibration	3	AM 6.1.1 Benzo and Z by LCQQQ	
P1-F5	50 ng/mL	Benzos_Z_Drugs_ACN_FA_ISP_2016.m	BZ-50 ng/mL_r001.d	Calibration	4	AM 6.1.1 Benzo and Z by LCQQQ	
P1-F4	100 ng/mL	Benzos_Z_Drugs_ACN_FA_ISP_2016.m	BZ-100 ng/mL_r001.d	Calibration	5	AM 6.1.1 Benzo and Z by LCQQQ	
P1-F3	500 ng/mL	Benzos_Z_Drugs_ACN_FA_ISP_2016.m	BZ-500 ng/mL_r001.d	Calibration	6	AM 6.1.1 Benzo and Z by LCQQQ	
P1-F2	1000 ng/mL	Benzos_Z_Drugs_ACN_FA_ISP_2016.m	BZ-1000 ng/mL_r001.d	Calibration	7	AM 6.1.1 Benzo and Z by LCQQQ	
P1-F1	3000 ng/mL	Benzos_Z_Drugs_ACN_FA_ISP_2016.m	BZ-3000 ng/mL_r001.d	Calibration	8		

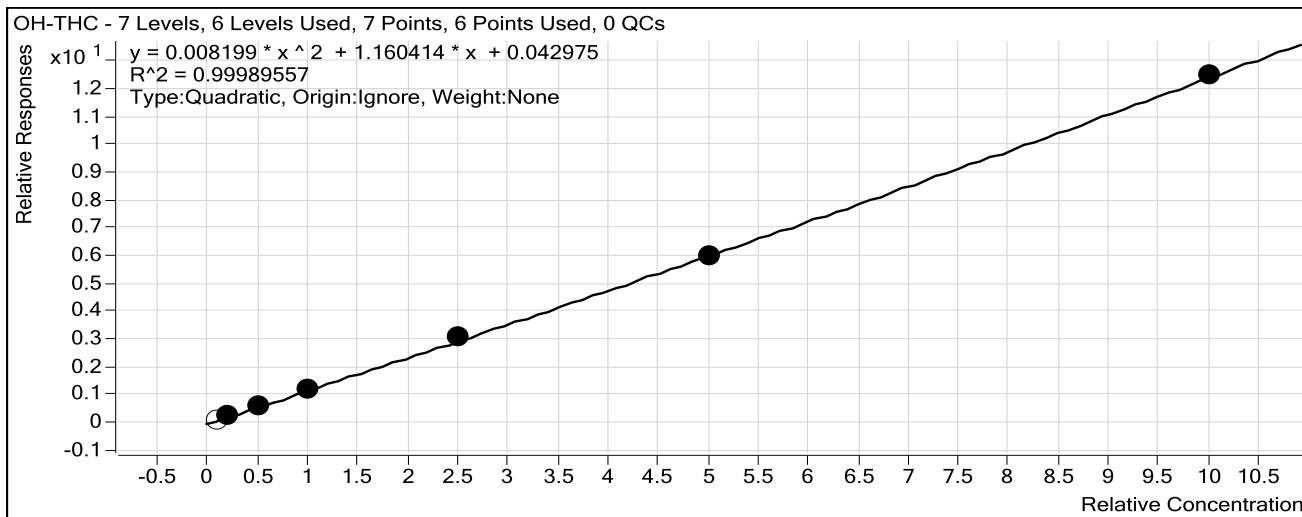
Sample Position	Sample Name	Method	Data File	Sample Type	Level Name	Comment	Info. 
						AM 6.1.1 Benzo and Z by LCQQQ	
P1-F9	Blank	Benzos_Z_Drugs_ACN_FA_ISP_2016.m	BZ-Carryover blank1_r001.d	Blank		AM 6.1.1 Benzo and Z by LCQQQ	
P1-E9	Negative Blood Control	Benzos_Z_Drugs_ACN_FA_ISP_2016.m	BZ-NC-B_r001.d	Sample		AM 6.1.1 Benzo and Z by LCQQQ	UTAK Negative Whole Blood LOT B1013
P1-E8	Positive Blood Control	Benzos_Z_Drugs_ACN_FA_ISP_2016.m	BZ-PC-B-r001.d	Sample		AM 6.1.1 Benzo and Z by LCQQQ	Benzodiazepines Mix Cerilliant lot FE012413-02 in UTAK LOT B1013
P1-E9	Blank - M2016- 0608-1	Benzos_Z_Drugs_ACN_FA_ISP_2016.m	BZ-Carryover blank-M2016- 0608-1_r001.d	Blank		AM 6.1.1 Benzo and Z by LCQQQ	
P1-E7	M2016- 0608-1	Benzos_Z_Drugs_ACN_FA_ISP_2016.m	BZ-M2016-0608-1- r001.d	Sample		AM 6.1.1 Benzo and Z by LCQQQ	Blood
P1-E9	Blank - P2016- 0405-1	Benzos_Z_Drugs_ACN_FA_ISP_2016.m	BZ-Carryover blank-P2016- 0405-1_r001.d	Blank		AM 6.1.1 Benzo and Z by LCQQQ	
P1-E6	P2016- 0405-1	Benzos_Z_Drugs_ACN_FA_ISP_2016.m	BZ-P2016-0405-1- r001.d	Sample		AM 6.1.1 Benzo and Z by LCQQQ	Blood
P1-E9	Blank - P2016- 0419-1	Benzos_Z_Drugs_ACN_FA_ISP_2016.m	BZ-Carryover blank-P2016- 0419-1_r001.d	Blank		AM 6.1.1 Benzo and Z by LCQQQ	
P1-E5	P2016- 0419-1	Benzos_Z_Drugs_ACN_FA_ISP_2016.m	BZ-P2016-0419-1- r001.d	Sample		AM 6.1.1 Benzo and Z by LCQQQ	Blood
P1-E9	Blank - P2016- 0422-1	Benzos_Z_Drugs_ACN_FA_ISP_2016.m	BZ-Carryover blank-P2016- 0422-1_r001.d	Blank		AM 6.1.1 Benzo and Z by LCQQQ	
P1-E4	P2016- 0422-1	Benzos_Z_Drugs_ACN_FA_ISP_2016.m	BZ-P2016-0422-1- r001.d	Sample		AM 6.1.1 Benzo and Z by LCQQQ	Blood
P1-E9	Blank - P2016- 0436-1	Benzos_Z_Drugs_ACN_FA_ISP_2016.m	BZ-Carryover blank-P2016- 0436-1_r001.d	Blank		AM 6.1.1 Benzo and Z by LCQQQ	
P1-E3	P2016- 0436-1	Benzos_Z_Drugs_ACN_FA_ISP_2016.m	BZ-P2016-0436-1- r001.d	Sample		AM 6.1.1 Benzo and Z by LCQQQ	Blood
P1-E9	Blank - P2016- 0519-1	Benzos_Z_Drugs_ACN_FA_ISP_2016.m	BZ-Carryover blank-P2016- 0519-1_r001.d	Blank		AM 6.1.1 Benzo and Z by LCQQQ	
P1-E2	P2016- 0519-1	Benzos_Z_Drugs_ACN_FA_ISP_2016.m	BZ-P2016-0519-1- r001.d	Sample		AM 6.1.1 Benzo and Z by LCQQQ	Blood
P1-F9	Blank	Benzos_Z_Drugs_ACN_FA_ISP_2016.m	BZ-Carryover blank3_r001.d	Blank		AM 6.1.1 Benzo and Z by LCQQQ	

ISP Forensics Calibration Curve Report

Batch Data Path C:\MassHunter\Data\2016\Combined\072216 CS\QuantResults\cnpoc722.batch.bin

Last Calib Update 7/25/2016 12:08 PM **Analyst Name** ISP TOX

Target Compound *OH-THC*
Internal Standard *OH-THC-d3*



Sample	Level	Enabled	Exp Conc	Final Conc	Accuracy
Blood: 1_5 ng/mL	1	<input type="checkbox"/>	1	0.7	69.1
Blood: 2_10 ng/mL	2	<input checked="" type="checkbox"/>	2	1.7	83.5
Blood: 5_25 ng/mL	3	<input checked="" type="checkbox"/>	5	5.1	102.7
Blood: 10_50 ng/mL	4	<input checked="" type="checkbox"/>	10	9.9	99.1
Blood: 25_125 ng/mL	5	<input checked="" type="checkbox"/>	25	25.7	102.7
Blood: 50_250 ng/mL	6	<input checked="" type="checkbox"/>	50	49.5	99.1
Blood: 100_500 ng/mL	7	<input checked="" type="checkbox"/>	100	100.1	100.1

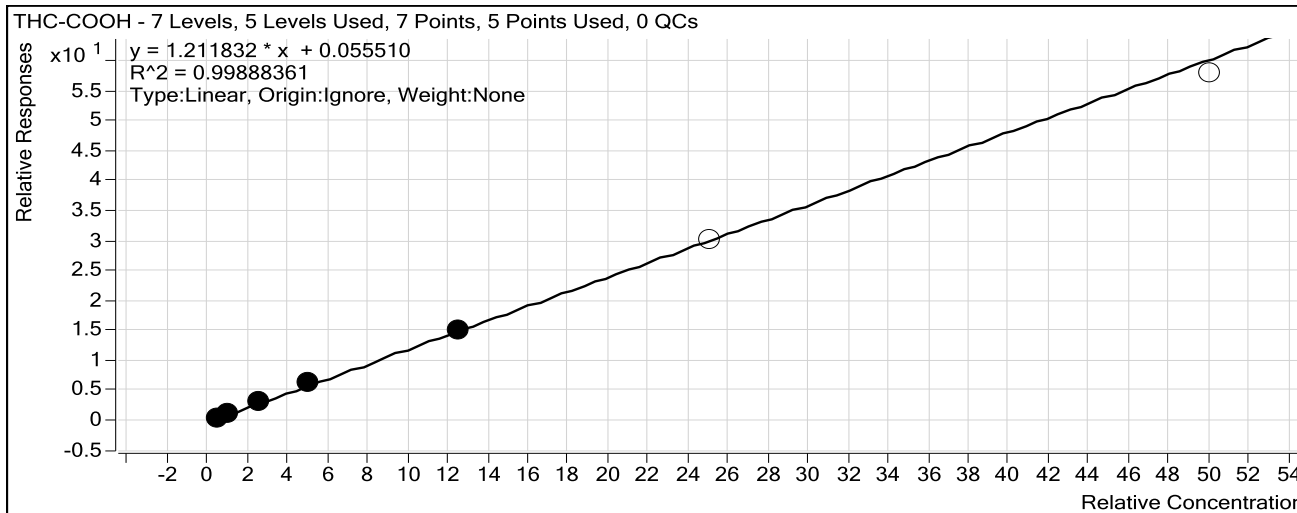
ISP Forensics Calibration Curve Report

Batch Data Path C:\MassHunter\Data\2016\Combined\072216 CS\QuantResults\cnpoc722.batch.bin

Last Calib Update 7/25/2016 12:08 PM **Analyst Name** ISP TOX

Target Compound *THC-COOH*

Internal Standard *THC-COOH-d3*



Sample	Level	Enabled	Exp Conc	Final Conc	Accuracy
Blood: 1_5 ng/mL	1	<input checked="" type="checkbox"/>	5	4.1	82.0
Blood: 2_10 ng/mL	2	<input checked="" type="checkbox"/>	10	8.2	82.4
Blood: 5_25 ng/mL	3	<input checked="" type="checkbox"/>	25	27.1	108.3
Blood: 10_50 ng/mL	4	<input checked="" type="checkbox"/>	50	51.4	102.8
Blood: 25_125 ng/mL	5	<input checked="" type="checkbox"/>	125	124.2	99.4
Blood: 50_250 ng/mL	6	<input type="checkbox"/>	250	247.6	99.0
Blood: 100_500 ng/mL	7	<input type="checkbox"/>	500	477.5	95.5

ISP Forensics Calibration Curve Report

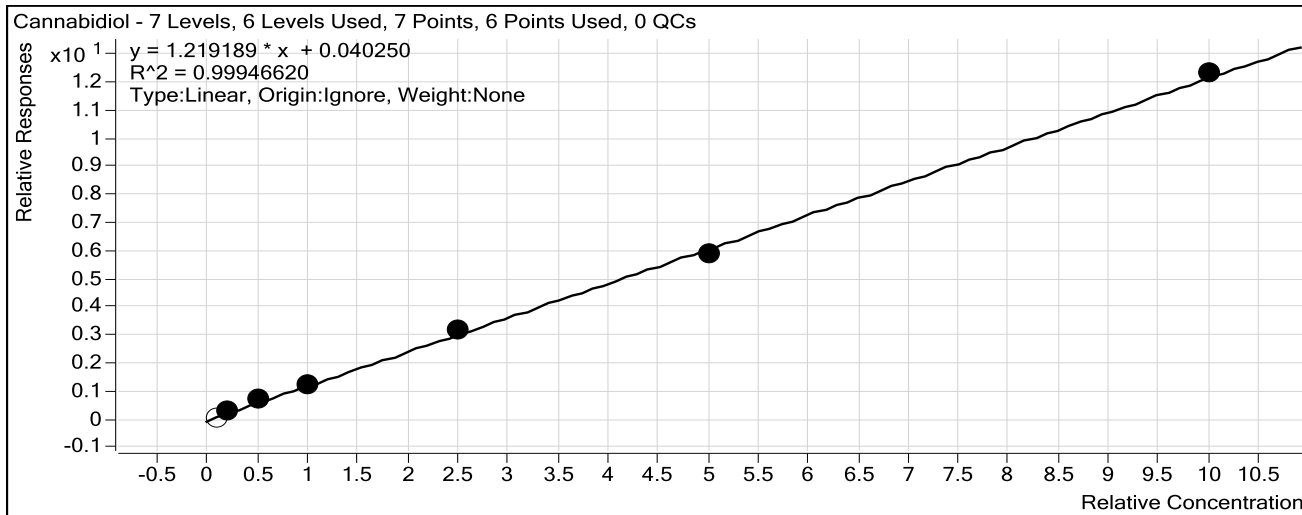
CS

Batch Data Path C:\MassHunter\Data\2016\Combined\072216 CS\QuantResults\cnpoc722.batch.bin

Last Calib Update 7/25/2016 12:08 PM **Analyst Name** ISP TOX

Target Compound *Cannabidiol*

Internal Standard *Cannabidiol-d3*



Sample	Level	Enabled	Exp Conc	Final Conc	Accuracy
Blood: 1_5 ng/mL	1	<input type="checkbox"/>	1	0.4	35.2
Blood: 2_10 ng/mL	2	<input checked="" type="checkbox"/>	2	2.0	98.2
Blood: 5_25 ng/mL	3	<input checked="" type="checkbox"/>	5	5.6	111.5
Blood: 10_50 ng/mL	4	<input checked="" type="checkbox"/>	10	10.0	99.5
Blood: 25_125 ng/mL	5	<input checked="" type="checkbox"/>	25	25.5	101.9
Blood: 50_250 ng/mL	6	<input checked="" type="checkbox"/>	50	48.3	96.7
Blood: 100_500 ng/mL	7	<input checked="" type="checkbox"/>	100	100.7	100.7

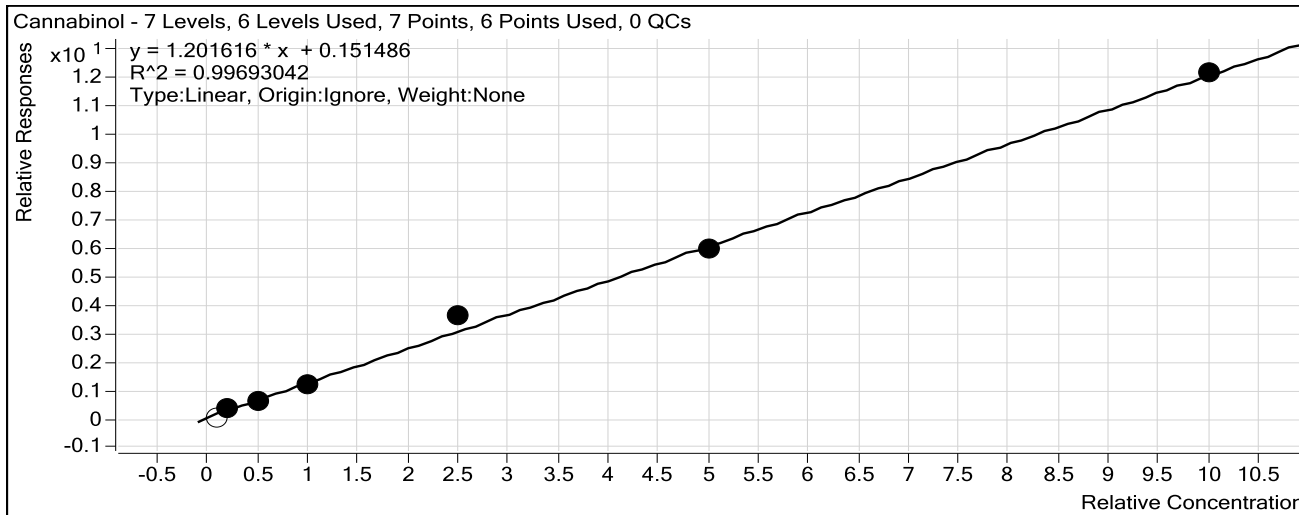
ISP Forensics Calibration Curve Report

Batch Data Path C:\MassHunter\Data\2016\Combined\072216 CS\QuantResults\cnpoc722.batch.bin

Last Calib Update 7/25/2016 12:08 PM **Analyst Name** ISP TOX

Target Compound *Cannabinol*

Internal Standard *Cannabinol-d3*



Sample	Level	Enabled	Exp Conc	Final Conc	Accuracy
Blood: 1_5 ng/mL	1	<input type="checkbox"/>	1	0.0	0.0
Blood: 2_10 ng/mL	2	<input checked="" type="checkbox"/>	2	1.6	82.4
Blood: 5_25 ng/mL	3	<input checked="" type="checkbox"/>	5	4.1	82.2
Blood: 10_50 ng/mL	4	<input checked="" type="checkbox"/>	10	8.8	88.2
Blood: 25_125 ng/mL	5	<input checked="" type="checkbox"/>	25	29.1	116.4
Blood: 50_250 ng/mL	6	<input checked="" type="checkbox"/>	50	48.4	96.7
Blood: 100_500 ng/mL	7	<input checked="" type="checkbox"/>	100	100.0	100.0

ISP Forensics Calibration Curve Report

Batch Data Path C:\MassHunter\Data\2016\Combined\072216 CS\QuantResults\cnpoc722.batch.bin

Last Calib Update 7/25/2016 12:08 PM

Analyst Name

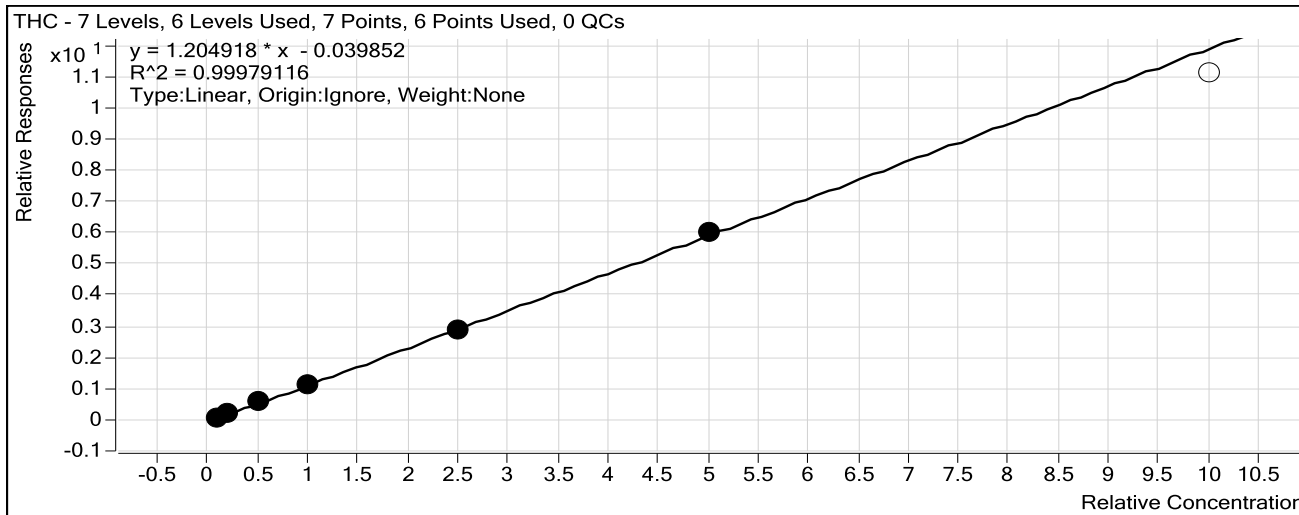
ISP TOX

Target Compound

THC

Internal Standard

THC-d3



Sample	Level	Enabled	Exp Conc	Final Conc	Accuracy
Blood: 1_5 ng/mL	1	<input checked="" type="checkbox"/>	1	1.0	101.2
Blood: 2_10 ng/mL	2	<input checked="" type="checkbox"/>	2	2.0	99.7
Blood: 5_25 ng/mL	3	<input checked="" type="checkbox"/>	5	5.4	107.6
Blood: 10_50 ng/mL	4	<input checked="" type="checkbox"/>	10	9.8	98.1
Blood: 25_125 ng/mL	5	<input checked="" type="checkbox"/>	25	24.6	98.4
Blood: 50_250 ng/mL	6	<input checked="" type="checkbox"/>	50	50.2	100.4
Blood: 100_500 ng/mL	7	<input type="checkbox"/>	100	92.8	92.8

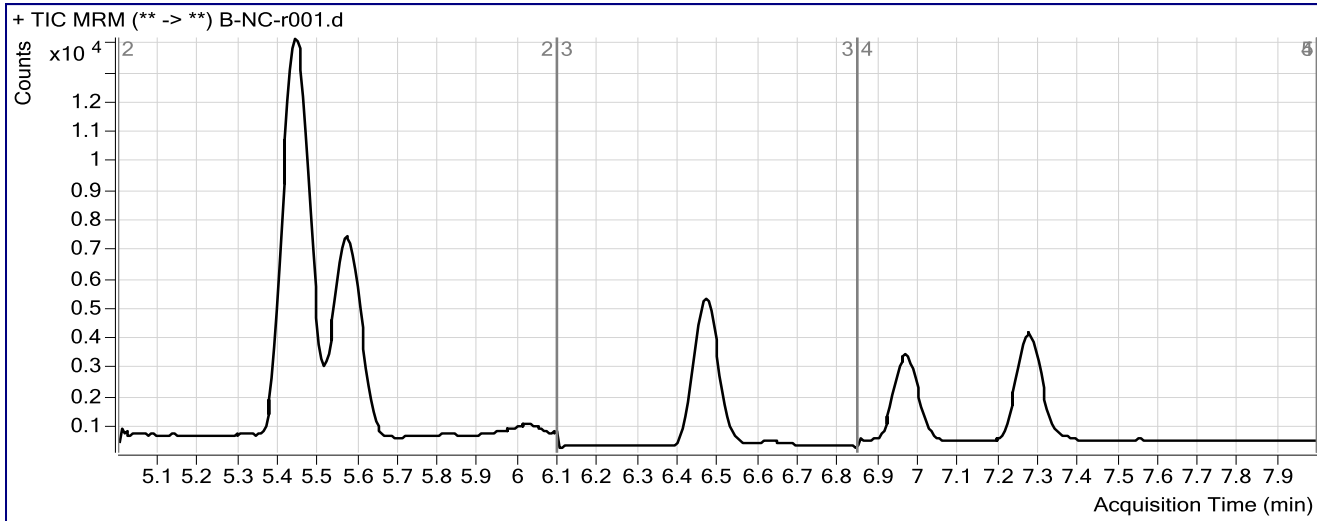
ISP FORENSICS Pocatello Cannabinoid Analysis Report

Batch Data Path C:\MassHunter\Data\2016\Combined\072216 CS\QuantResults\cnpoc722.batch.bin
Analysis Time 7/25/2016 12:08 PM **Analyst Name** ISPUser
Report Time 7/25/2016 12:10 PM **Reporter Name** ISPUser
Last Calib Update 7/25/2016 12:08 PM **Batch State** Processed

Analysis Info

Acq Time 2016-07-22 14:46 **Data File** B-NC-r001.d
Sample Type Sample **Sample Name** Blood Negative Control
Dilution 1 **Acq Method** isp blood cannabinoids Poky 2016-1.m
Position P2-A9 **Sample Info** Negative Blood UTAK Lot B1013
Inj Vol -1 **Comment** AM 6.1.2 Cannabinoids by LCQQQ

Sample Chromatogram



CS

ISP FORENSICS

Pocatello

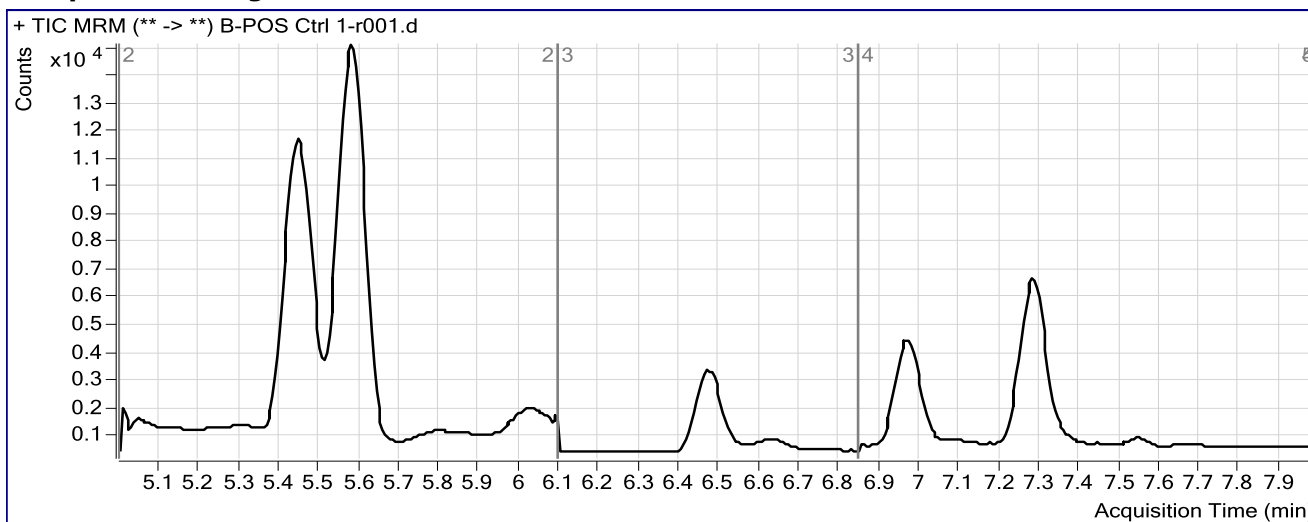
Cannabinoid Analysis Report

Batch Data Path C:\MassHunter\Data\2016\Combined\072216 CS\QuantResults\cnpoc722.batch.bin
Analysis Time 7/25/2016 12:08 PM **Analyst Name** ISPUser
Report Time 7/25/2016 12:10 PM **Reporter Name** ISPUser
Last Calib Update 7/25/2016 12:08 PM **Batch State** Processed

Analysis Info

Acq Time 2016-07-22 15:00 **Data File** B-POS Ctrl 1-r001.d
Sample Type Sample **Sample Name** Blood PC 1
Dilution 1 **Acq Method** isp blood cannabinoids Poky 2016-1.m
Position P2-B1 **Sample Info** Positive Control- UTAK B1013 + WS060716
Inj Vol -1 **Comment** AM 6.1.2 Cannabinoids by LCQQQ

Sample Chromatogram



Results

Compound	ISTD Compound	RT	Response	ISTD Resp	Resp Ratio	Final Conc
THC-COOH	THC-COOH-d3	5.586	15350	9496	1.6164	12.8807
Cannabidiol	Cannabidiol-d3	6.628	132	6493	0.0203	0.0000
Cannabinol	Cannabinol-d3	6.972	3697	9290	0.3980	2.0512
THC	THC-d3	7.283	2777	9285	0.2991	2.8130

ISP FORENSICS

Pocatello

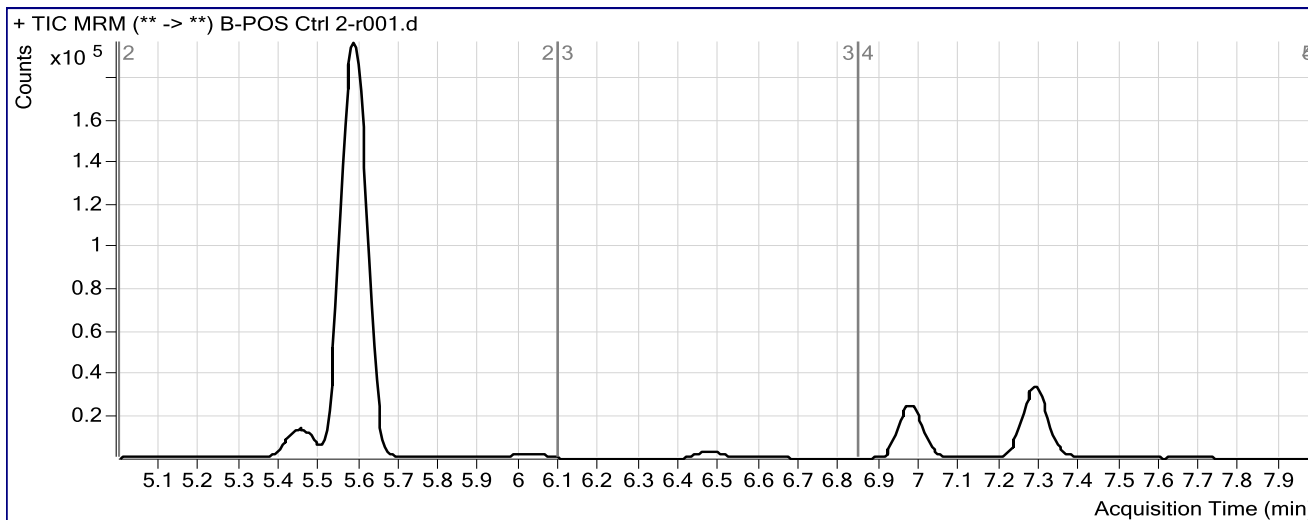
Cannabinoid Analysis Report

Batch Data Path	C:\MassHunter\Data\2016\Combined\072216 CS\QuantResults\cnpoc722.batch.bin		
Analysis Time	7/25/2016 12:08 PM	Analyst Name	ISPUser
Report Time	7/25/2016 12:11 PM	Reporter Name	ISPUser
Last Calib Update	7/25/2016 12:08 PM	Batch State	Processed

Analysis Info

Acq Time	2016-07-22 17:52	Data File	B-POS Ctrl 2-r001.d
Sample Type	Sample	Sample Name	Blood PC 2
Dilution	1	Acq Method	isp blood cannabinoids Poky 2016-1.m
Position	P2-C3	Sample Info	Positive Control- UTAK B1013 + WS060716
Inj Vol	-1	Comment	AM 6.1.2 Cannabinoids by LCQQQ

Sample Chromatogram



Results

Compound	ISTD Compound	RT	Response	ISTD Resp	Resp Ratio	Final Conc
THC-COOH	THC-COOH-d3	5.586	331631	12275	27.0164	222.4804
Cannabidiol	Cannabidiol-d3	6.491	82	7071	0.0116	0.0000
Cannabinol	Cannabinol-d3	6.978	65412	9446	6.9246	56.3668
THC	THC-d3	7.283	51494	9153	5.6262	47.0246